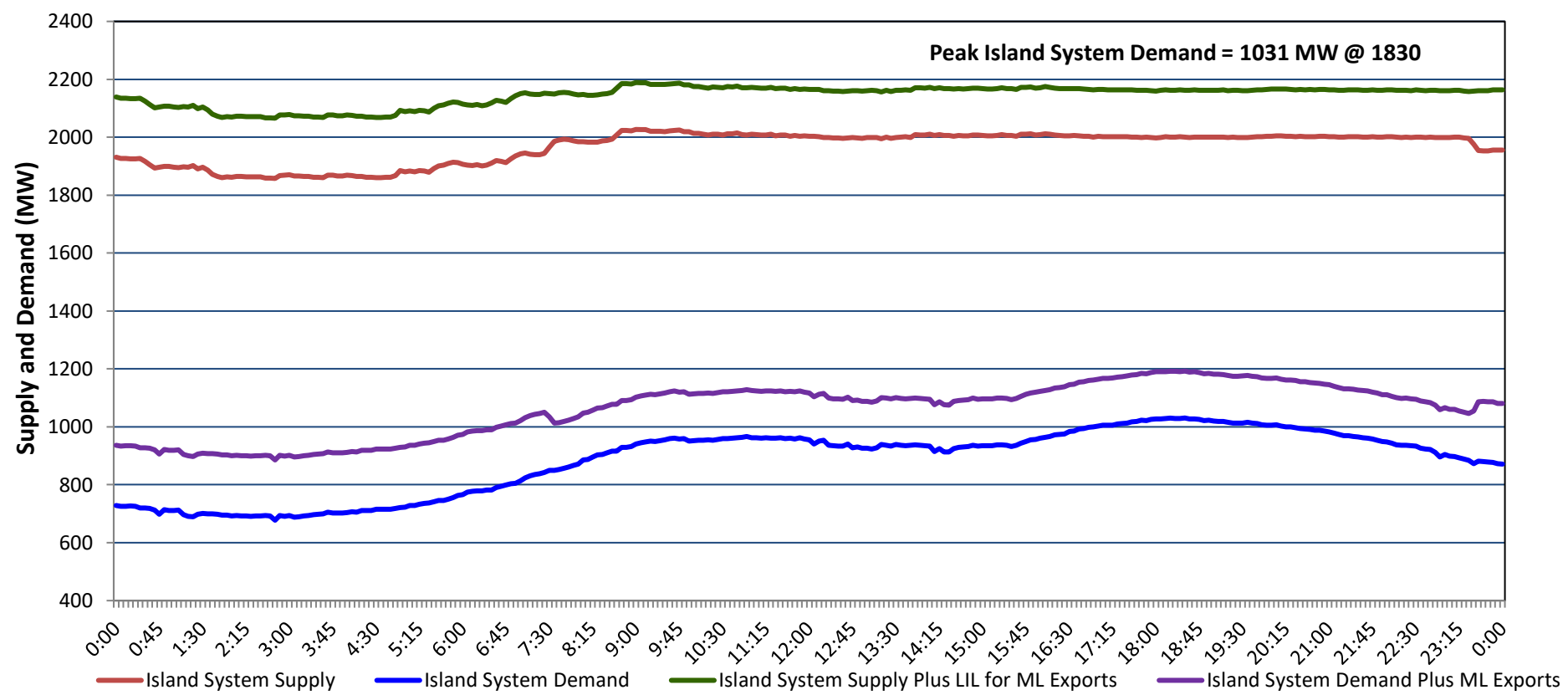


# Newfoundland Labrador Hydro (NLH) Supply and Demand Status Report Filed Monday, November 04, 2024

## Section 1 Island Interconnected System - Supply, Demand & Exports Actual 24 Hour System Performance For Saturday, November 02, 2024



### Island Supply Notes For November 02, 2024 <sup>1</sup>

- A As of 1011 hours, April 12, 2024, Holyrood Unit 1 unavailable due to planned outage (170 MW).
- B As of 1950 hours, October 18, 2024, Labrador Island Link available at 450 MW due to forced derating (700 MW) - Bipole.
- C As of 0859 hours, October 25, 2024, Hardwoods Gas Turbine unavailable due to planned outage (50 MW).

## Section 2 Island Interconnected System - Supply, Demand & Outlook

| Sun, Nov 03, 2024                          | Island System Outlook <sup>2</sup> | Seven-Day Forecast          | Island System Daily Peak Demand (MW) |                       |
|--|------------------------------------|-----------------------------|--------------------------------------|-----------------------|
|  |                                    |                             | Forecast <sup>8</sup>                | Adjusted <sup>6</sup> |
| Island System Supply: <sup>4</sup>         | 2,007 MW                           | Sunday, November 3, 2024    | 1,135                                | 1,055                 |
| NLH Island Generation: <sup>3,7</sup>      | 1,475 MW                           | Monday, November 4, 2024    | 1,195                                | 1,115                 |
| NLH Island Power Purchases: <sup>5</sup>   | 70 MW                              | Tuesday, November 5, 2024   | 1,180                                | 1,100                 |
| NP and CBPP Owned Generation:              | 195 MW                             | Wednesday, November 6, 2024 | 1,015                                | 935                   |
| LIL/ML Net Imports to Island: <sup>9</sup> | 267 MW                             | Thursday, November 7, 2024  | 1,125                                | 1,045                 |
|  |                                    | Friday, November 8, 2024    | 1,125                                | 1,045                 |
| 7-Day Island Peak Demand Forecast:         | 1,195 MW                           | Saturday, November 9, 2024  | 1,105                                | 1,025                 |

### Island Supply Notes For November 03, 2024

- Notes:
1. Generation outages for running and corrective maintenance are included. These are not unusual for power system operations. They generally do not impact customer supply. Hydro schedules outages to system equipment whenever possible to coincide with periods when customer demands are low and sufficient supply reserves are available. However, from time to time equipment outages are necessary and reserves may be impacted.
  2. As of 0800 Hours.
  3. Gross continuous unit output.
  4. Gross output from all Island sources (including Note 4).
  5. NLH Island Power Purchases include: ML Imports, Exploits Generation, Rattle Brook, Star Lake, Wind Generation and capacity assistance (when applicable).
  6. Adjusted for interruptible load and the impact of voltage reduction when applicable.
  7. Due to limitations inherent in the design of combustion turbines, the output of combustion turbines may be reduced in the event that ambient temperatures exceed the threshold required for full rated output. This threshold is dependent on the design of each turbine.
  8. Does not include ML Exports.
  9. LIL Import sunk in the Island System. Actual LIL flows will be restricted by various system conditions including, but not limited to, Island Load, ML Exports and Avalon Unit status.

## Section 3 Island Peak Demand and Exports Information Previous Day Actual Peak and Current Day Forecast Peak

|                   |                                  |       |           |
|-------------------|----------------------------------|-------|-----------|
| Sat, Nov 02, 2024 | Island Peak Demand <sup>10</sup> | 18:30 | 1,031 MW  |
|                   | Exports at Peak                  |       | 162 MW    |
|                   | LIL Net Imports to Island        |       | 5,479 MWh |
| Sun, Nov 03, 2024 | Forecast Island Peak Demand      |       | 1,135 MW  |

- Notes: 10. Island Demand is supplied by NLH generation and purchases, LIL Imports plus generation owned and operated by Newfoundland Power and Corner Brook Pulp & Paper (Deer Lake Power, DLP).